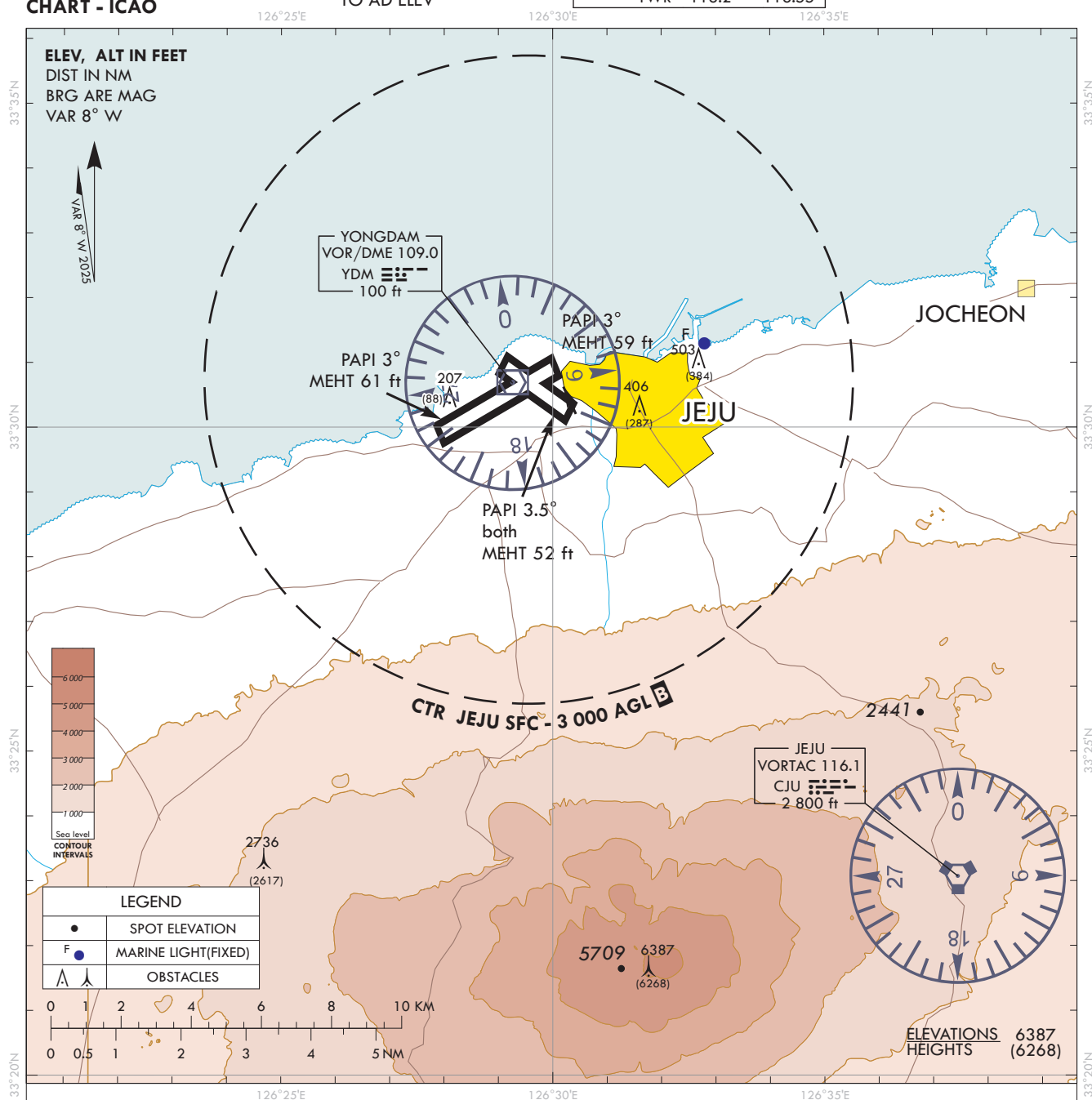


**VISUAL
APPROACH
CHART - ICAO**

AD ELEV 119 ft
**HEIGHTS RELATED
TO AD ELEV**

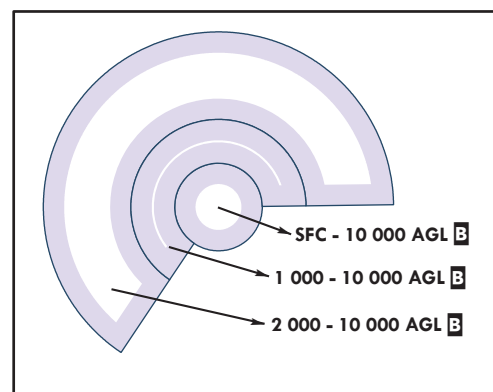
JEJU	APP	121.2	124.05
	DEP	119.225	
	TWR	118.2	118.55

JEJU/jeju Intl



VISUAL APPROACH PROCEDURE

1. Vectors for Visual approach may be initiated by ATC or approved upon pilot request on traffic permitting basis when :
 - a. Ceiling : above 500 ft plus MVA
 - b. Visibility : Not less than 3 SM
2. Remark : When conducting visual approach RWY 07, all arriving aircraft shall align the final approach course outside YDM 6 DME for noise abatement.
3. ATS airspace : Class B(Refer to ENR 2.2.-1)



Change : Page control.